

# Nottingham City Council Structure Chart

DECEMBER 2022

\* Statutory Officers under the Local Government and Housing Act 1989

CHIEF EXECUTIVE  
MEL BARRETT  
(HEAD OF PAID SERVICE)\*

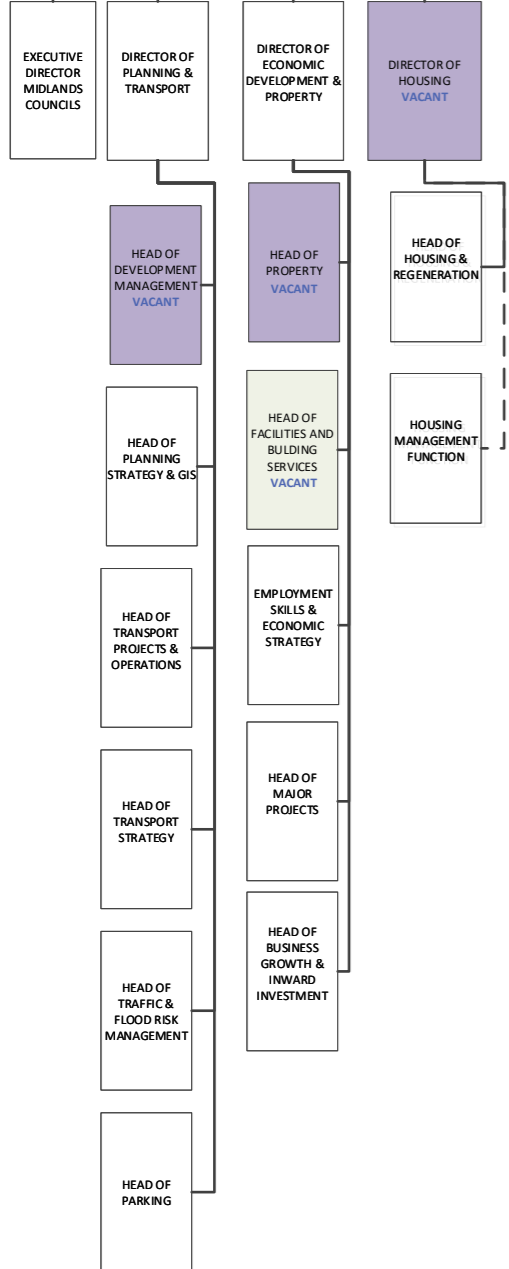
CORPORATE DIRECTOR FOR GROWTH & CITY DEVELOPMENT  
SAJEEDA ROSE

CORPORATE DIRECTOR FOR FINANCE & RESOURCES  
CLIVE HEAPHY  
(ROSS BROWN starts 03-Jan-2023)  
(Section 151 Officer)\*

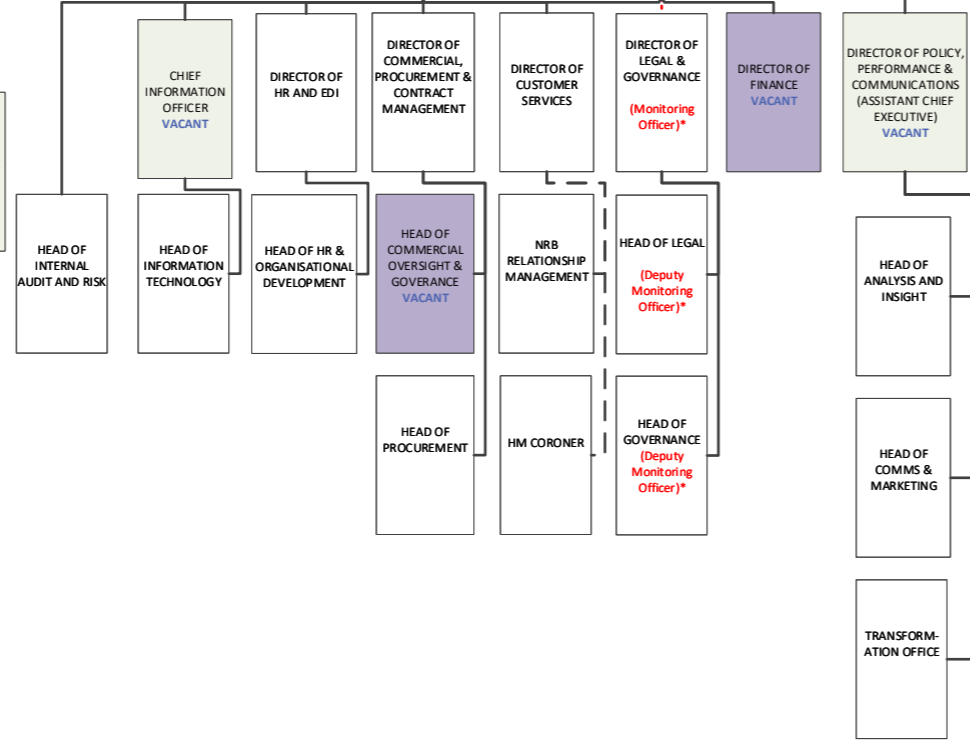
CORPORATE DIRECTOR FOR PEOPLE  
CATHERINE UNDERWOOD  
(Director of Children's Services and Director of Adult Social Services)\*

CORPORATE DIRECTOR FOR COMMUNITIES, ENVIRONMENT & RESIDENT SERVICES  
FRANK JORDAN

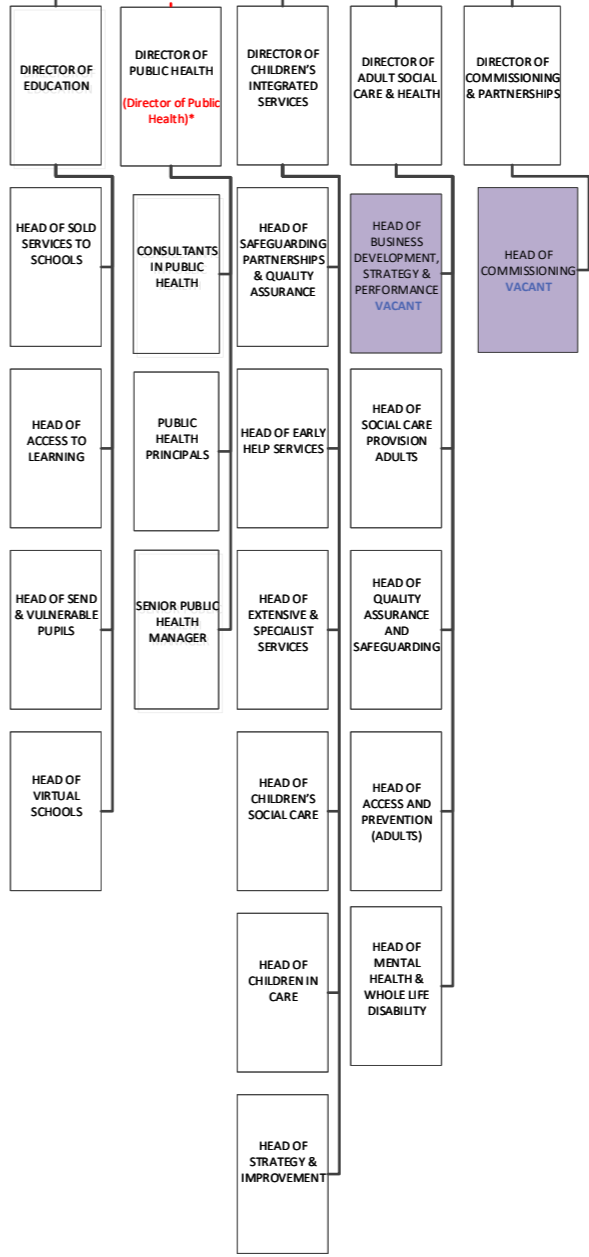
BUSINESS & PERFORMANCE MANAGER  
VACANT



BUSINESS & PERFORMANCE MANAGER  
VACANT



HEAD OF BUSINESS & PERFORMANCE  
VACANT



BUSINESS & PERFORMANCE MANAGER

